

"#\$%&'()*+,-./:0123456789@!@!@!

Ma a D La M S

!

Purpose

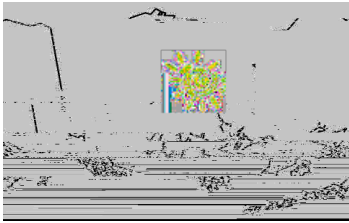
The Tanana District 4-H Leaders Council Scholarship encourages the 4-H community to develop and enhance the 4-H experience of its members, leaders, and community through participation in workshops, conferences, educational opportunities, or events related to their 4-H projects.

Procedures

- 1) Successful applicants must be a current enrolled 4-

"#\$%&'()*+,-./:0123456789@!@!@!
 : 4!+, -!. /#0/)'!#/\$*23)#; /0!(2!<#)(*<#(/=!*)/#(&\$; !2<<2)(3\$&(&'!82)!23)!+, -!*2553\$&(79!!
 "\$#\$%&'()*+,-./:0123456789@!@!@! 3<<2)('!#\$0!<)252(/'! 3<<4/5/\$(#44/#0/)'>&<!!
 #0!/03*#(&2\$#4!2<<2)(3\$&(&'!82)!+, -!723(>!#\$04/#0/)'9!

!



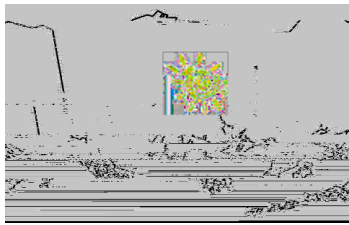
"#\$%&'()*+,-./:0123456789@!"

Ma a D La M S

!

!!

"#\$%&'()*+,-./:0123456789@!"
: 4!+,-./:0123456789@!"
"#\$%&'()*+,-./:0123456789@!"
#\$%&'()*+,-./:0123456789@!"



"#\$%&'()*+,-./:0123456789!@

Ma a D La M S

!

Applicant's Information

- 1) **Attach your 4-H Resume (not bullet points) to include the following. Show dates involved in each activity and include specific information and details where it will enhance your resume:**
- a) Years as member or leader (Leaders separate years as youth and as leader)
 - b) Clubs lead (type of leader) or youth include projects and clubs you are involved in
 - c) 4-H Recognition(s) received
 - d) Club or Leader Council offices or committees held
 - e) Educational conferences attended- District, State and National
 - f) District events such as clinics, camps, conferences, fundraising involved in and what role you played (i.e. chair, worker, committee member, etc.) Do not include fundraisers where 4-H youth or leader personally benefits.)
 - g) 4-H Community Service activities
 - h) Other 4-H events such as district classes you have attended or presented at

2) **Why do you want to attend this event? And what specific information or skill do you hope to gain from this event?**

"#\$%&'()*+,-./:0123456789!@
 : 4!+, -!./#0/)!#)/!/\$*23#;/0!(2!<#)(*<#(/=*)/#(&\$;!2<<2)(3\$&(&'!82)!23)!+, -!*2553\$&(79!!
 "\$#\$%&'()*+,-./#0/)!123\$*!&' 3<<2)('!#\$0!<)252(/'! 3<<4/5/\$(#44/#0/)'>&<!!
 #0!/03*#(&2\$#4!2<<2)(3\$&(&'!82)!+, -!723(>!#\$04/#0/)'9!

!

!

"#\$%&'()*+,-

!

"#\$%&'()*+,-