

February 28, 2020

Dan White, Chancellor

Amanda Wall, Interim Associate Vice Chancellor for Financial Services



Julie Queen, Vice Chancellor for Administrative Services

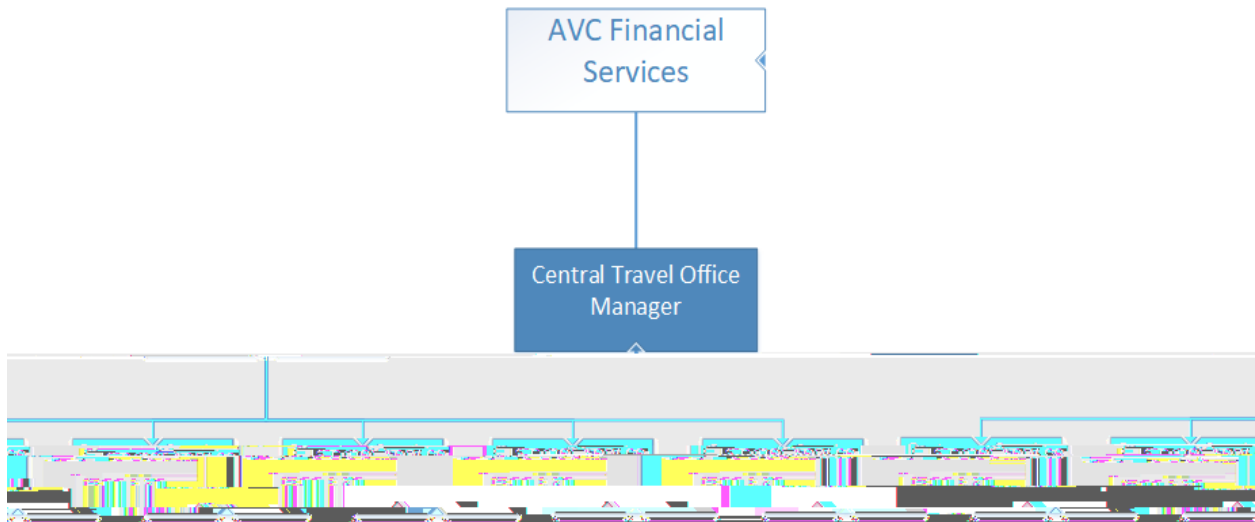
Central Travel Office (CTO)

It is apparent there is a need for increased efficiency and improved customer service in our travel process. In the current climate, this must be done with a focus on sustainability and financial savings. As the existing Shared Travel Services (STS) office is in transition and improved structure has been requested it is the optimal time to realize the potential for improvement while addressing these key areas.

The proposed UAF Central Travel Office (CTO) is a customer-centric business model. Organizing in this manner would require the office to absorb all travel functions for the University of Alaska Fairban

A single office for all travel transactions will provide consistent, accurate, and exemplary customer service. A CTO would require 6-7 full-time employees (one manager and 5-6 customer service technicians/trainers) to service the entire campus.

Below is a suggested organizational chart for the proposed office.



Utilizing the CTO model will enable each unit and department to focus its resources on achieving its unique goals by consolidating travel operations across multiple parts of the UAF campus. Staff members within departments are increasingly required to be experts in a wide range of systems and duties. This change will provide expert level travel service that does not need to be accounted for in departmental budgets, allowing these departments to reallocate their resources to other high priority needs. A dedicated travel office will increase the quality and speed of service delivery, and increase customer satisfaction while decreasing the overall cost. Cost savings will also be achieved through the ability to leverage the skills and knowledge of dedicated travel professionals.

This model concept was shared with Deans' Council this week and was received favorably by nearly all members present.

*Note: The State of Alaska, which also uses (Corporate Travel Management) CTM, recently moved to a shared service model under the Department of Administration. Users in Fairbanks*

---

